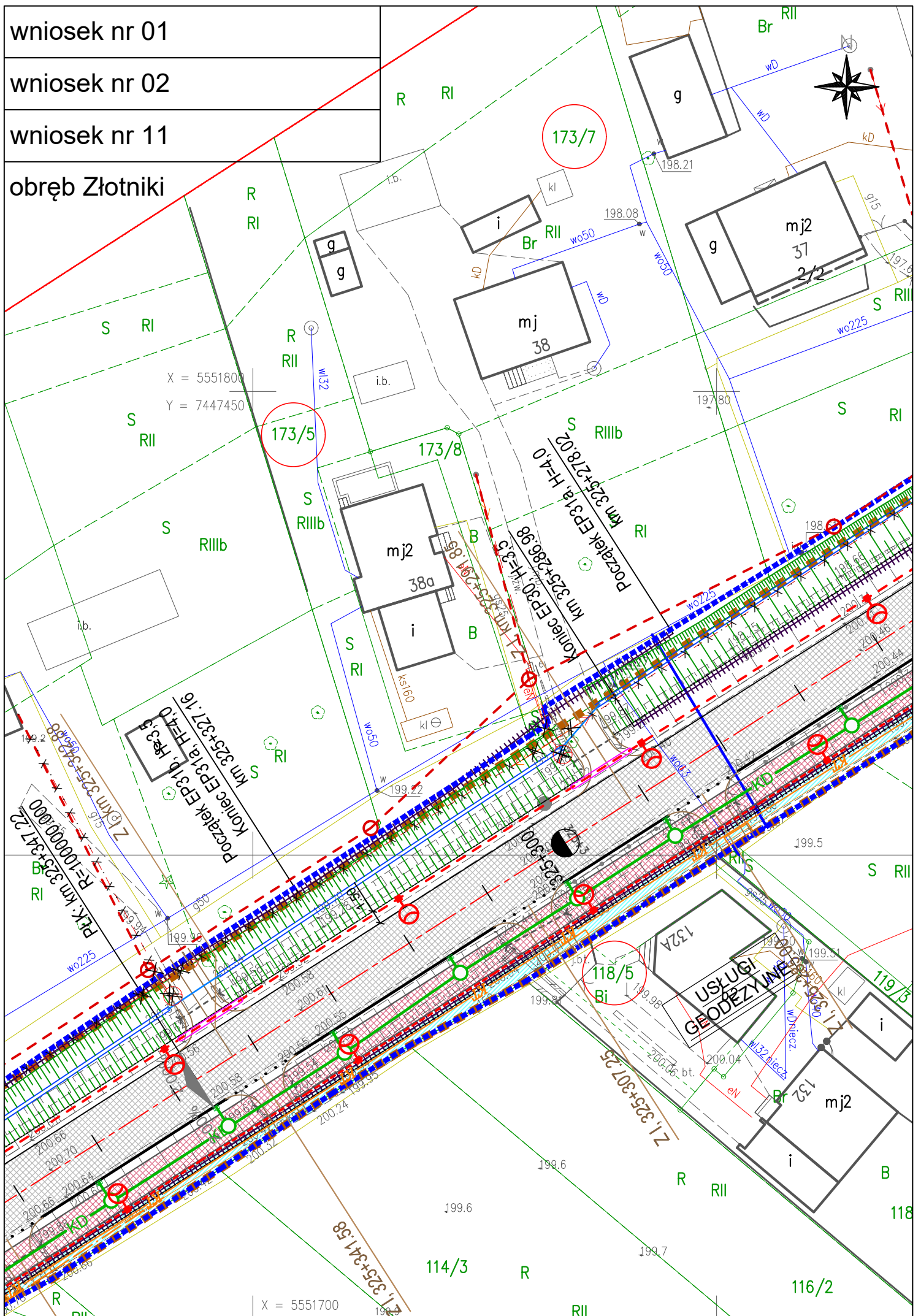


wniosek nr 01

wniosek nr 02

wniosek nr 11

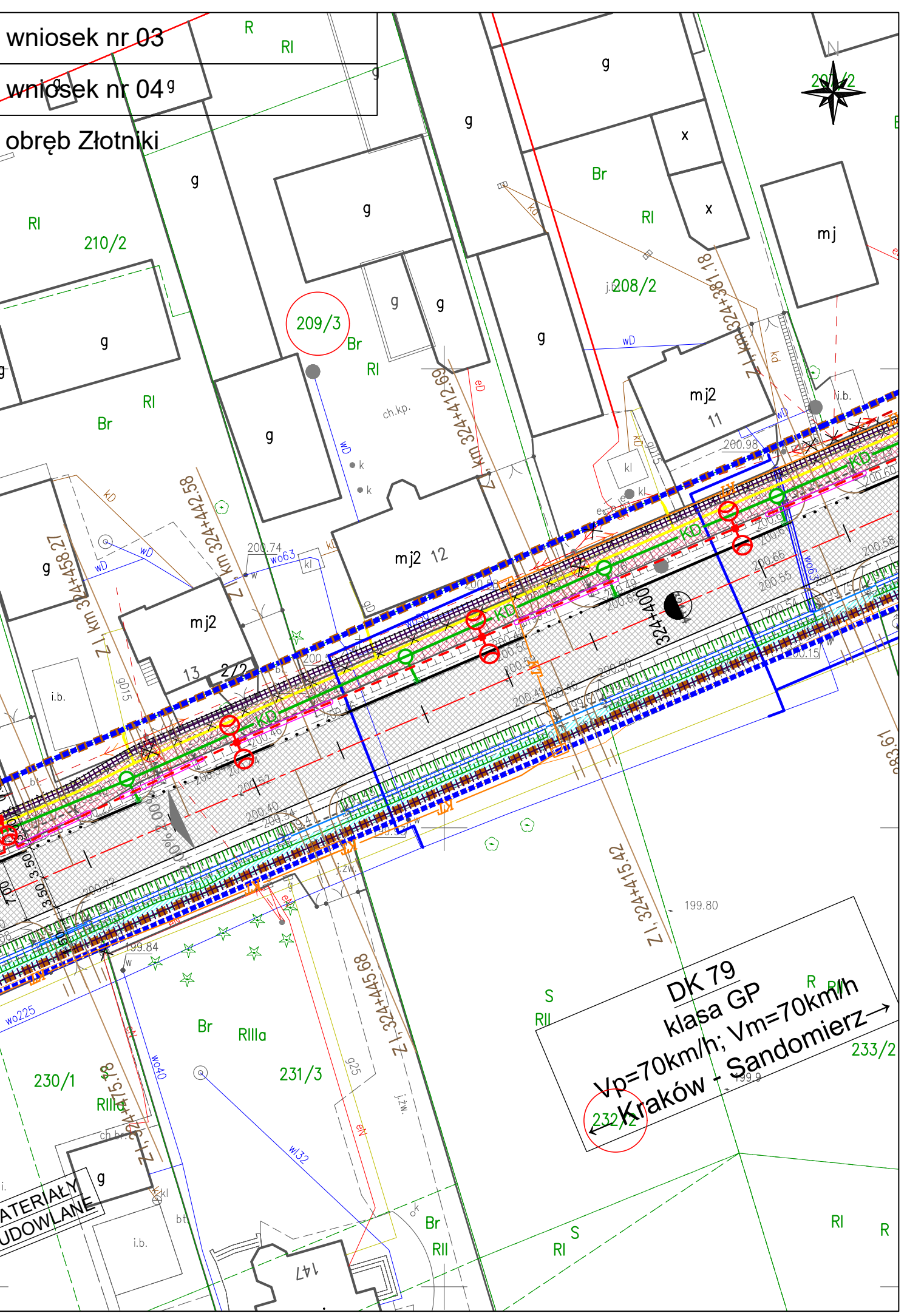
obręb Złotniki



wniosek nr 03

wniosek nr 04<sup>g</sup>

obręb Złotniki



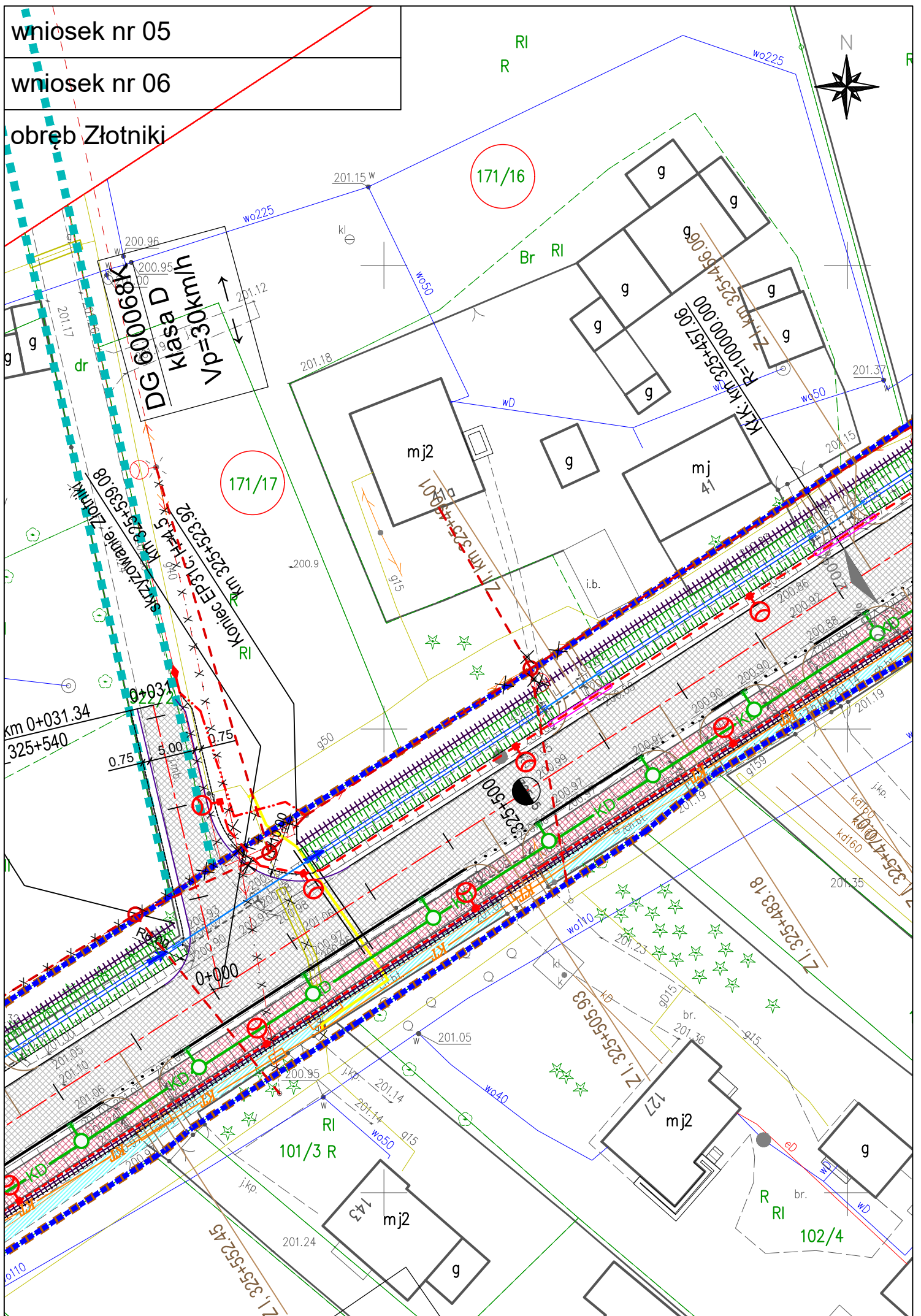
DK 79  
klasa GP  
 $V_p=70\text{km/h}$ ;  $V_m=70\text{km/h}$   
Kraków - Sandomierz →  
232/2

MATERIAŁY  
UDOWLANE

wniosek nr 05

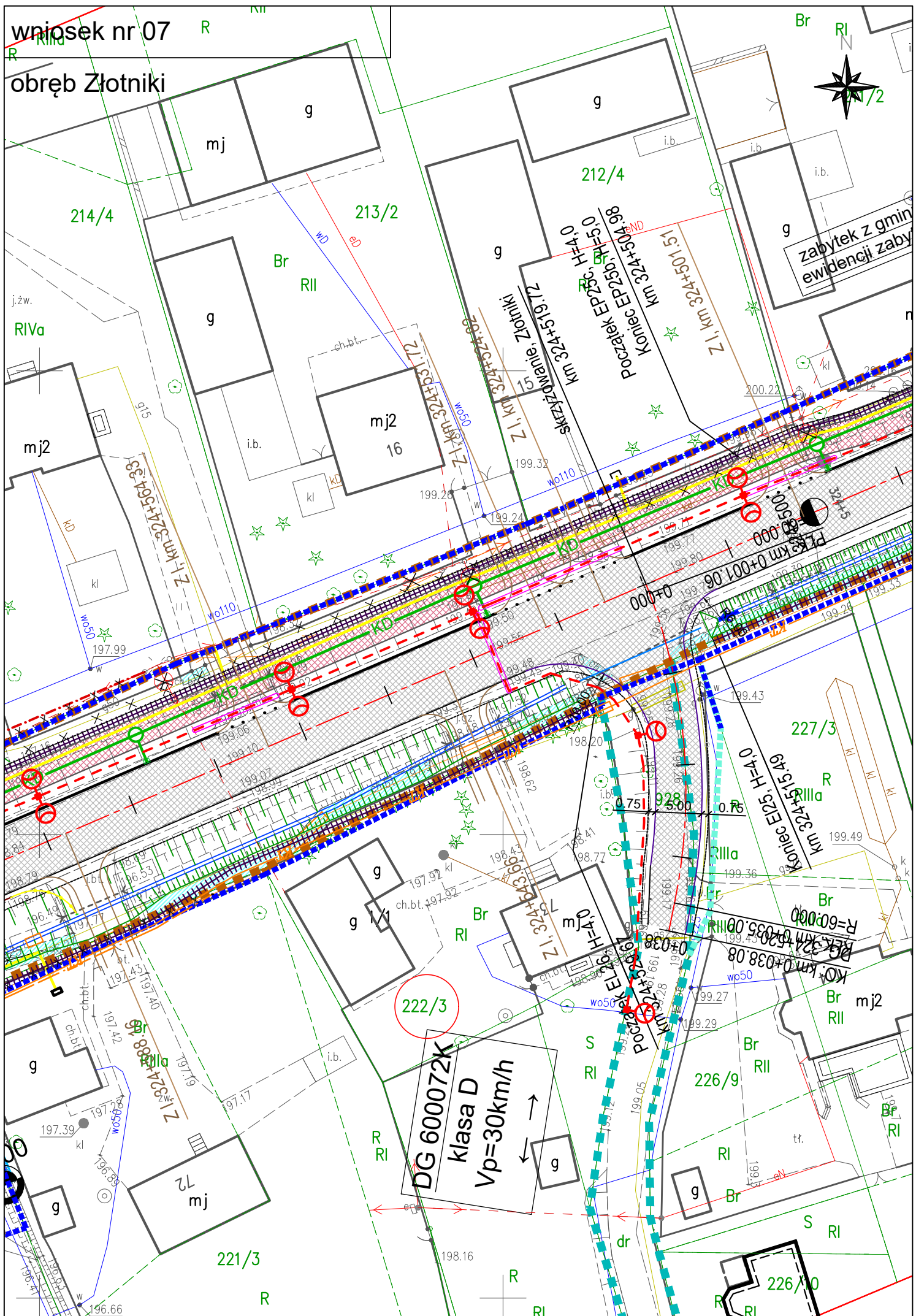
wniosek nr 06

obręb Złotniki



wniosek nr 07

obręb Złotniki



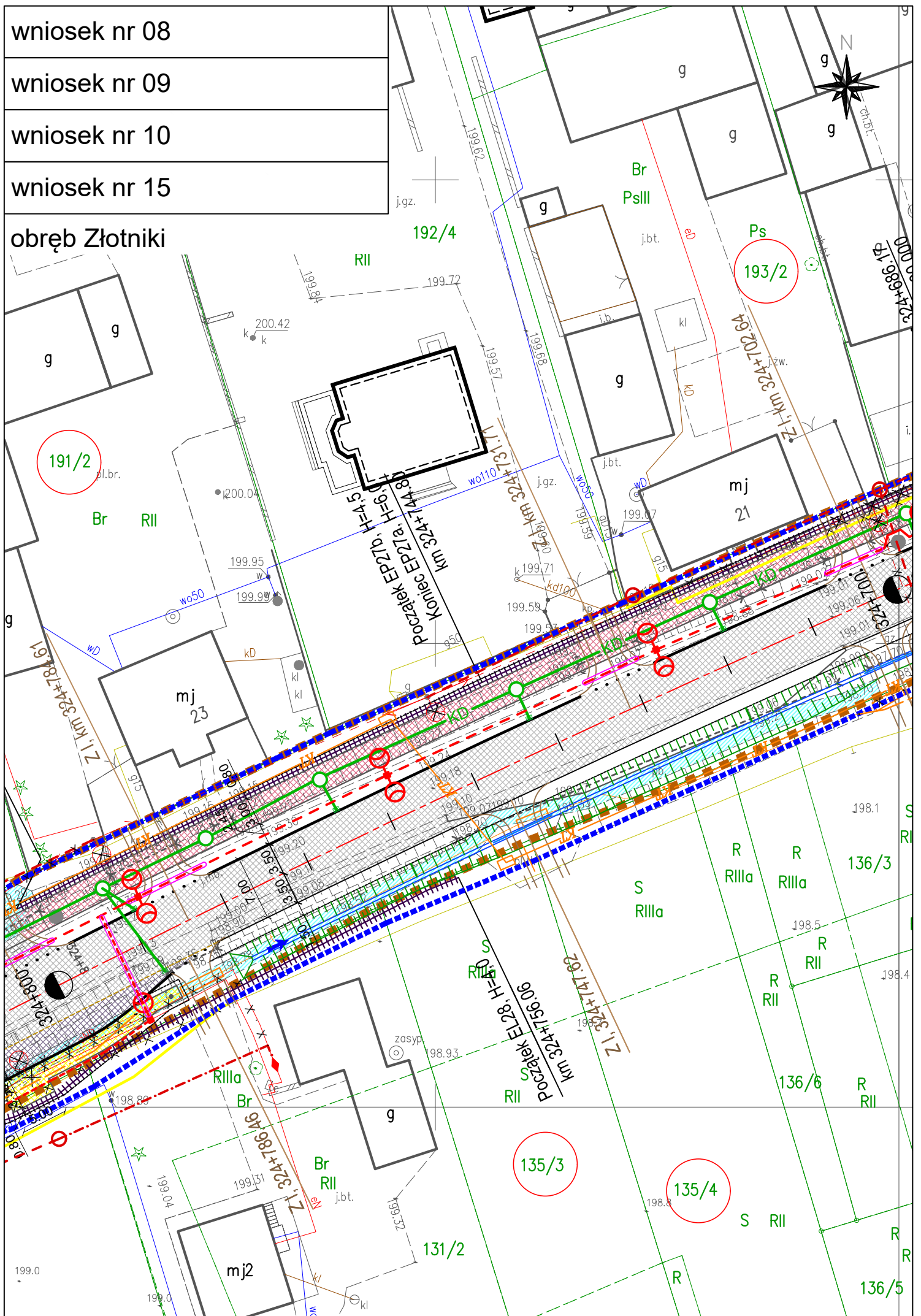
wniosek nr 08

wniosek nr 09

wniosek nr 10

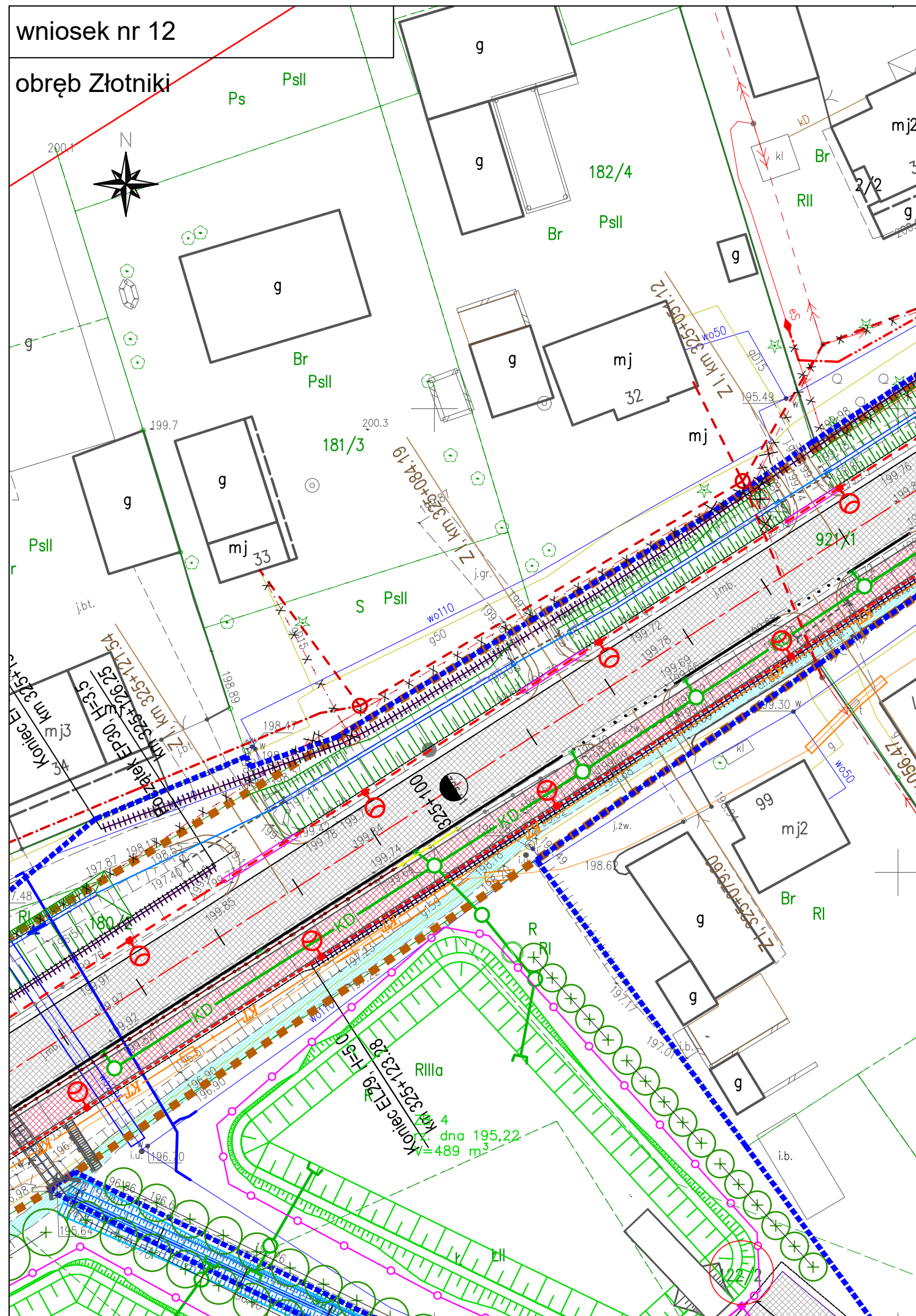
wniosek nr 15

obręb Złotniki



wniosek nr 12

obręb Złotniki

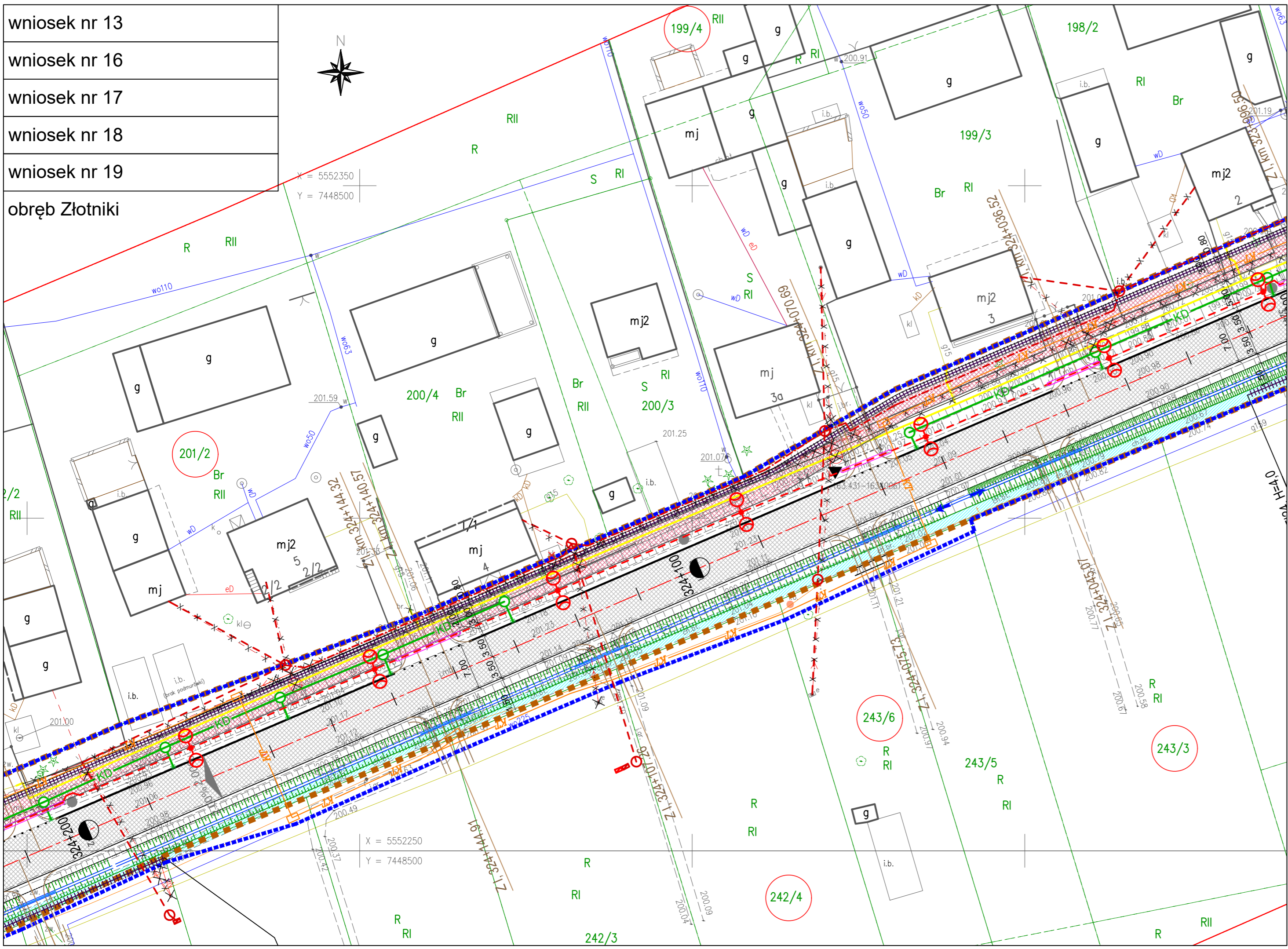


- wniosek nr 13
- wniosek nr 16
- wniosek nr 17
- wniosek nr 18
- wniosek nr 19
- obręb Złotniki



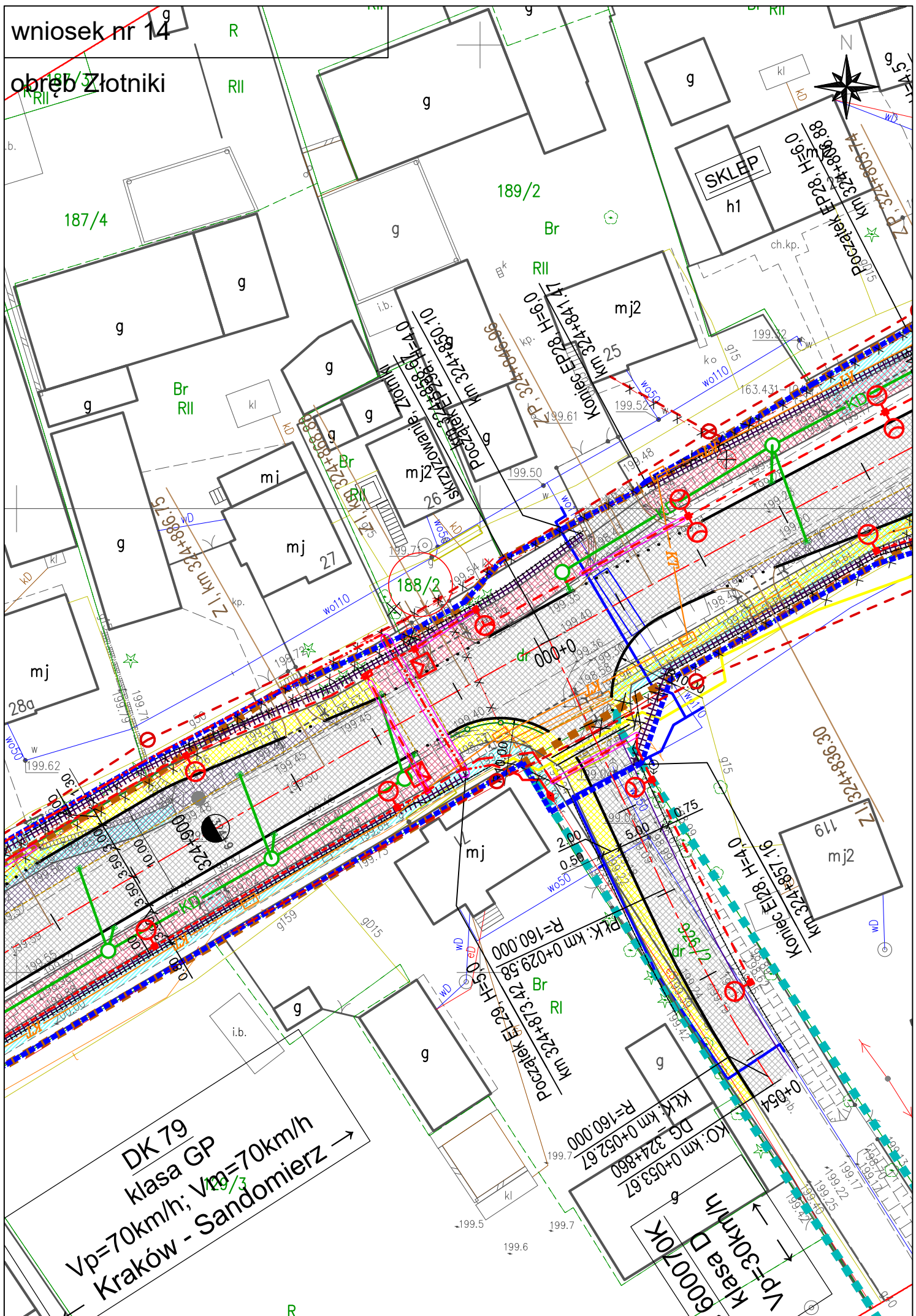
X = 5552350  
Y = 7448500

X = 5552250  
Y = 7448500

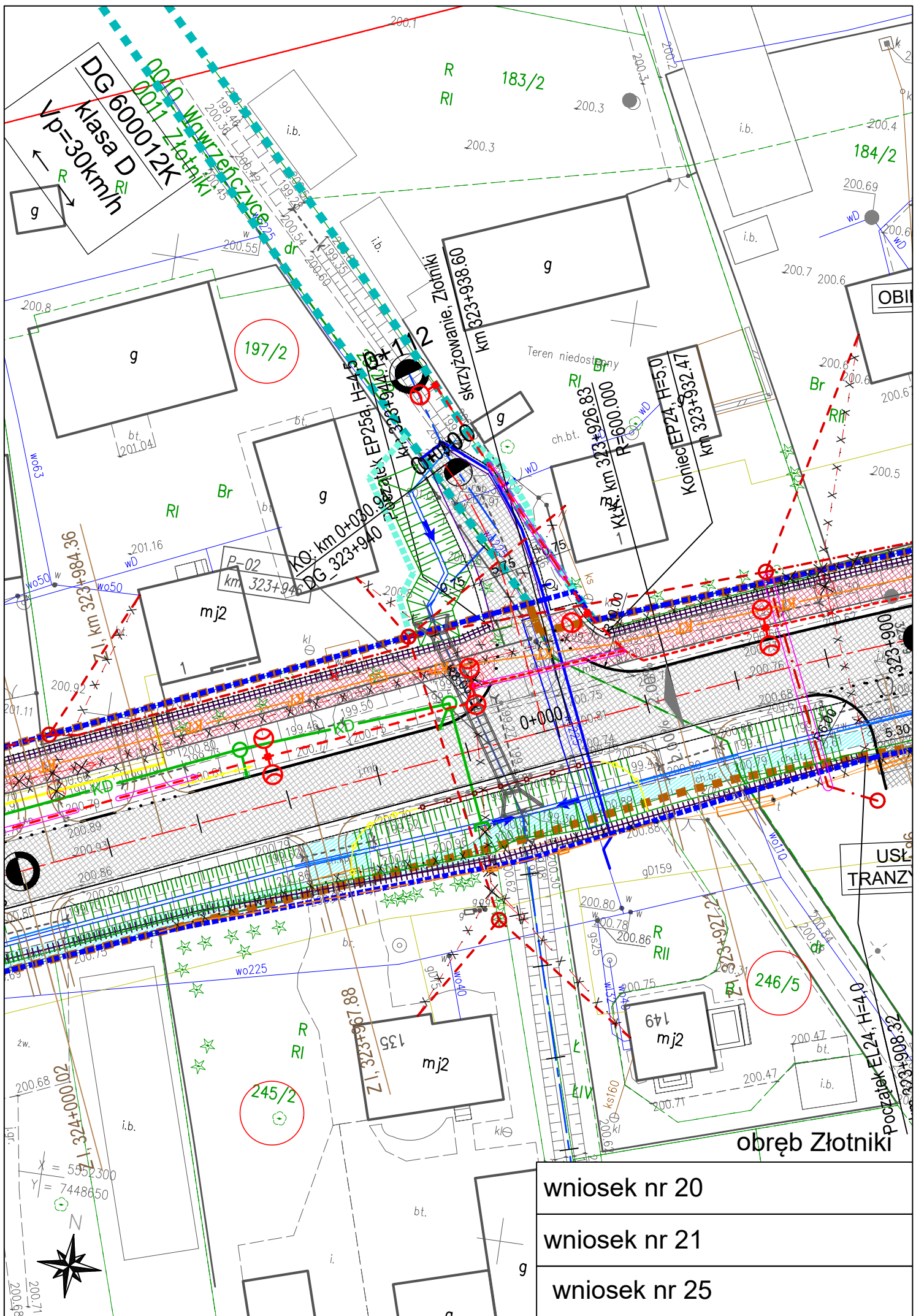


wniosek nr 14

obwód Złotniki







wniosek nr 20

wniosek nr 21

wniosek nr 25

obręb Złotniki

wniosek nr 22

wniosek nr 23

wniosek nr 24

obręb Złotniki

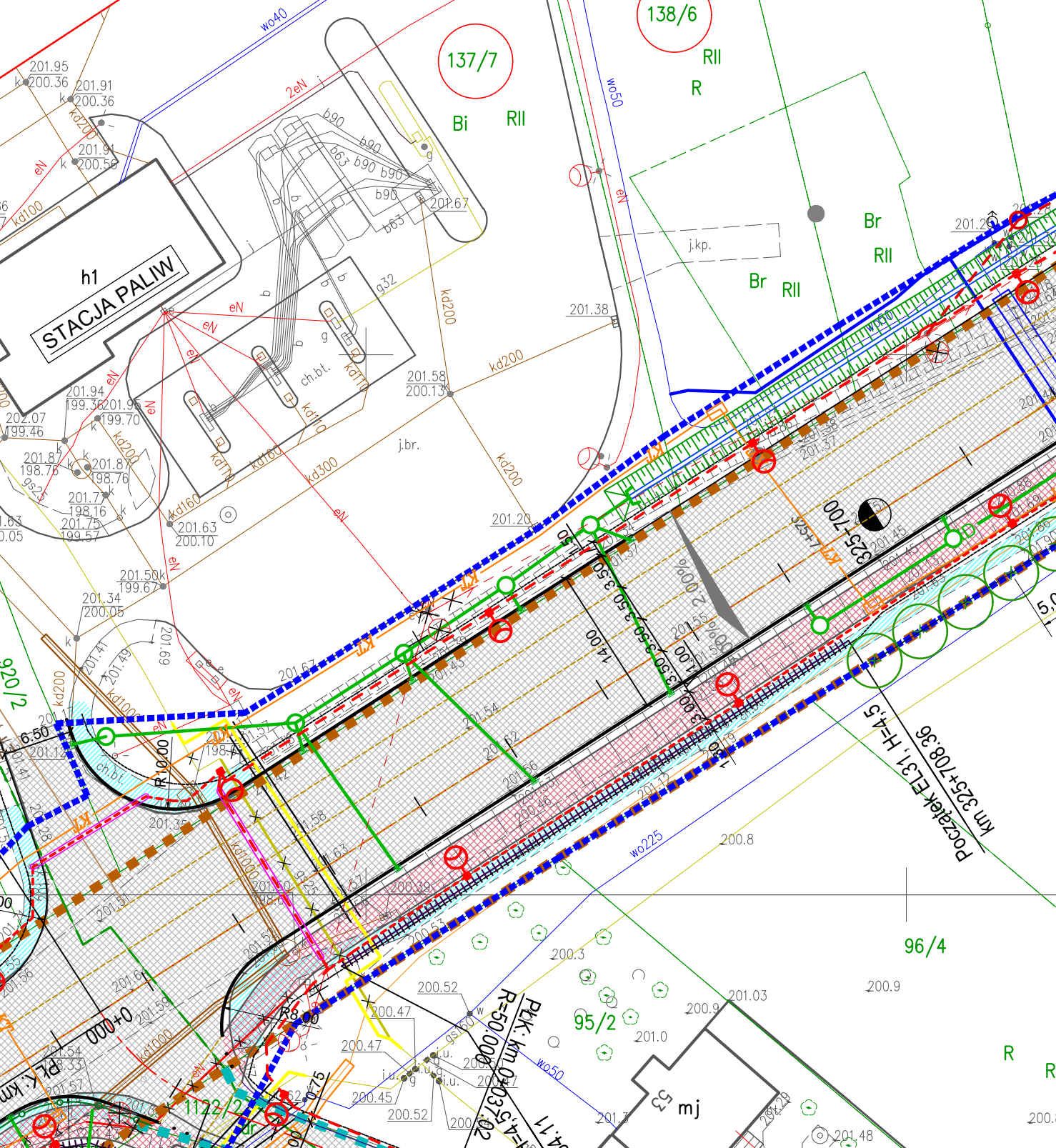
138/7



X = 5551600  
Y = 7447150

138/6

137/7



h1  
STACJA PALIW

Początek E1.31, H=4.5  
km 325+108.36

96/4

95/2

PK: km 0+037.02  
R=50,000  
R=43,500

mj