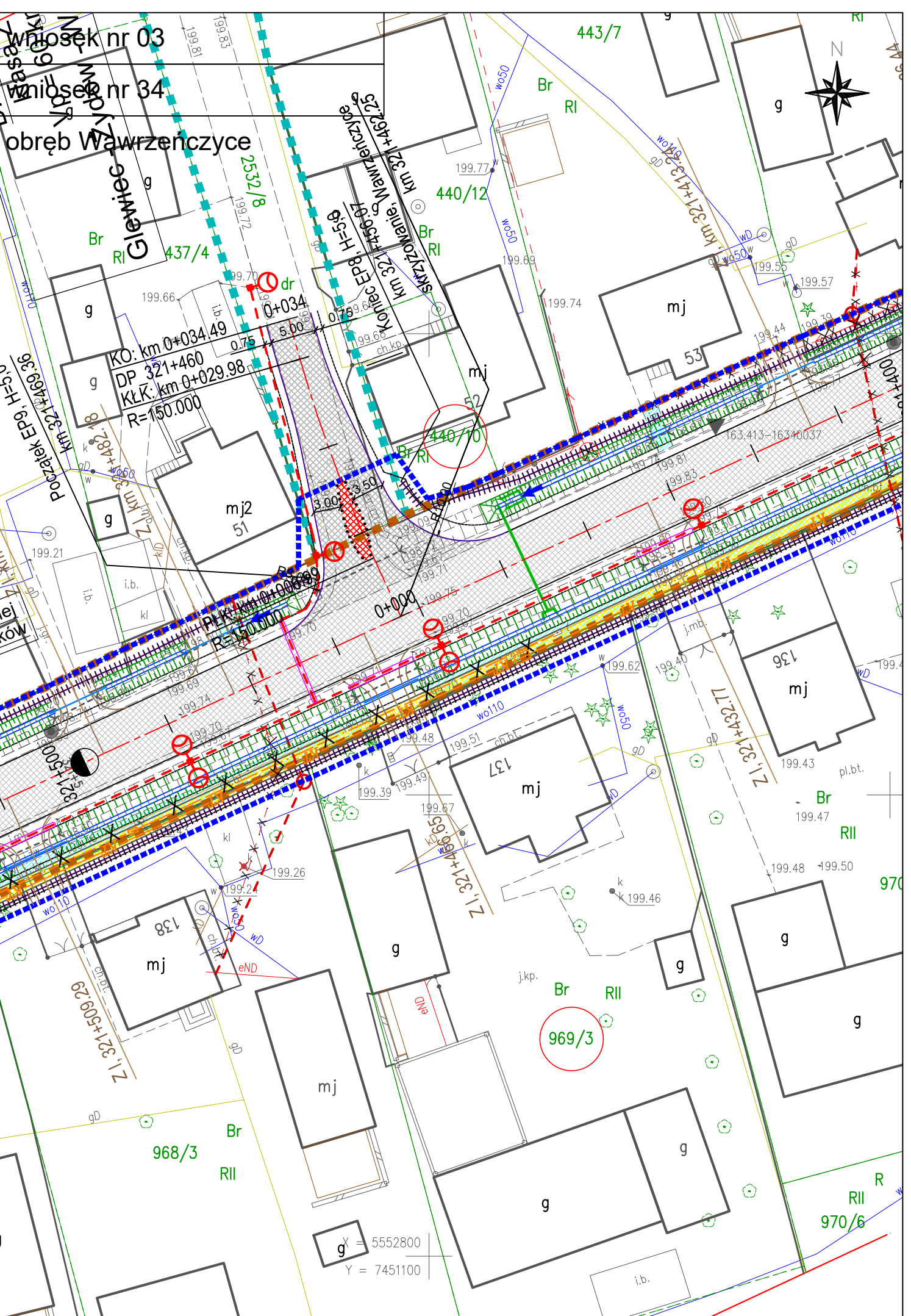
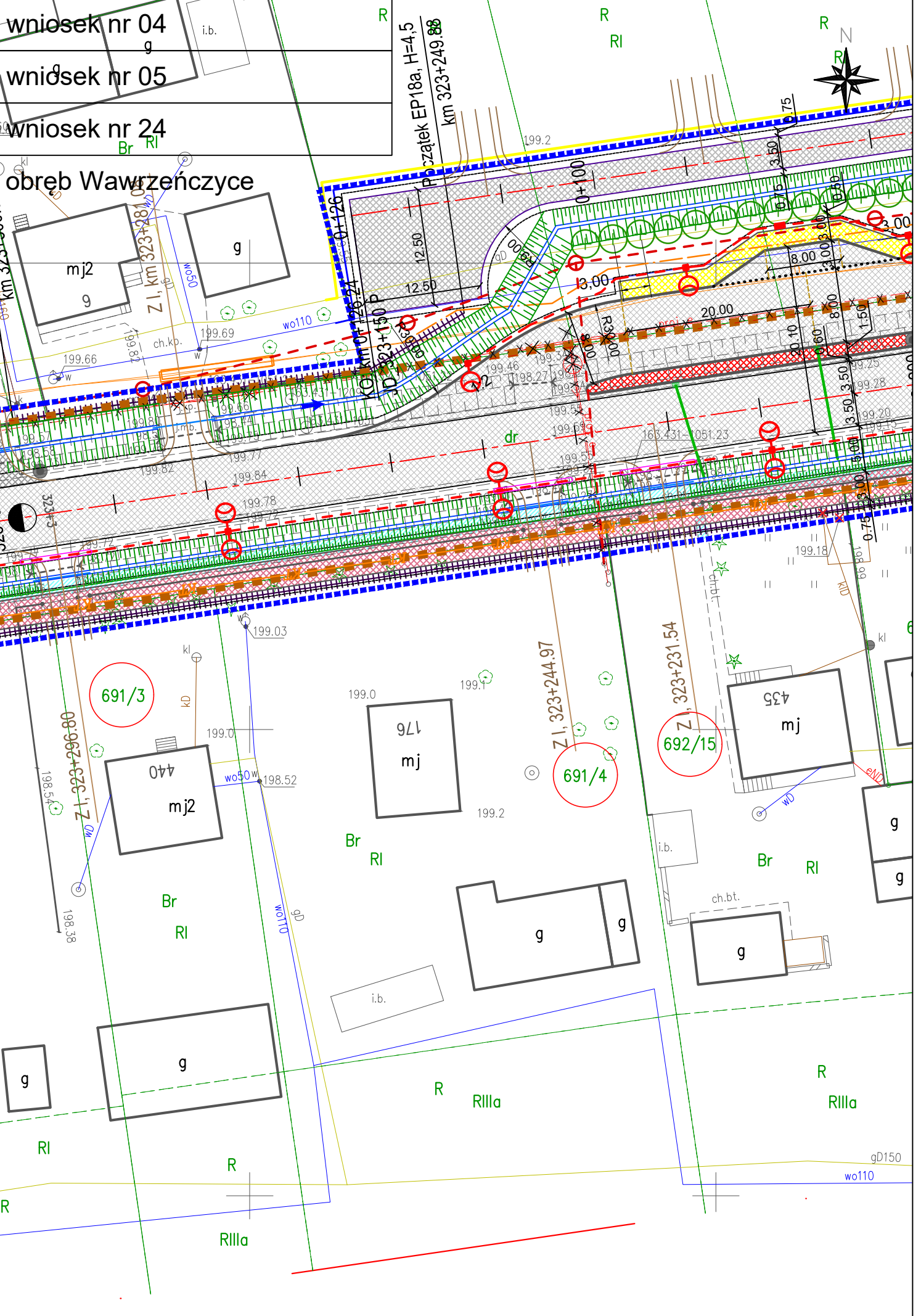


wniosek nr 03
wniosek nr 34
obręb Wawrzeńczyce



KO: km 0+034.49
DP 321+460
KŁK: km 0+029.98
R=150.000

$g^x = 5552800$
 $Y = 7451100$



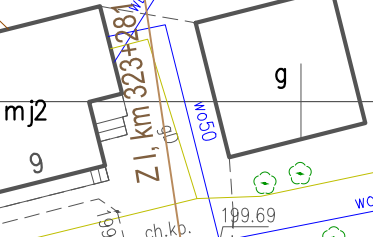
wniosek nr 04

wniosek nr 05

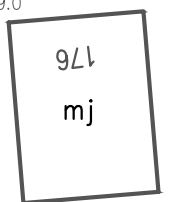
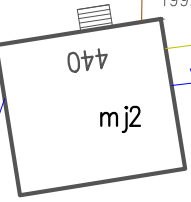
wniosek nr 24

obwód Wawrzeńczyce

Przebieg EP18a, H=4,5
km 323+249,88

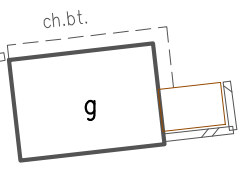
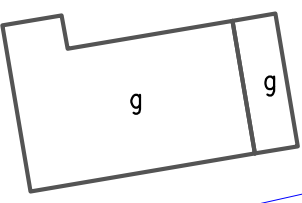
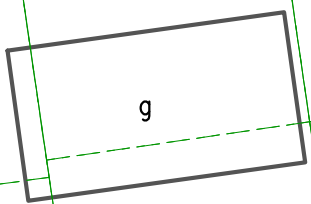
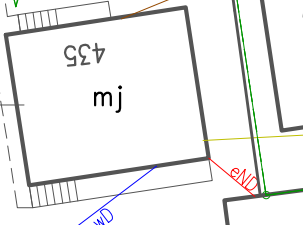


691/3



691/4

Z 323+231.54
692/15

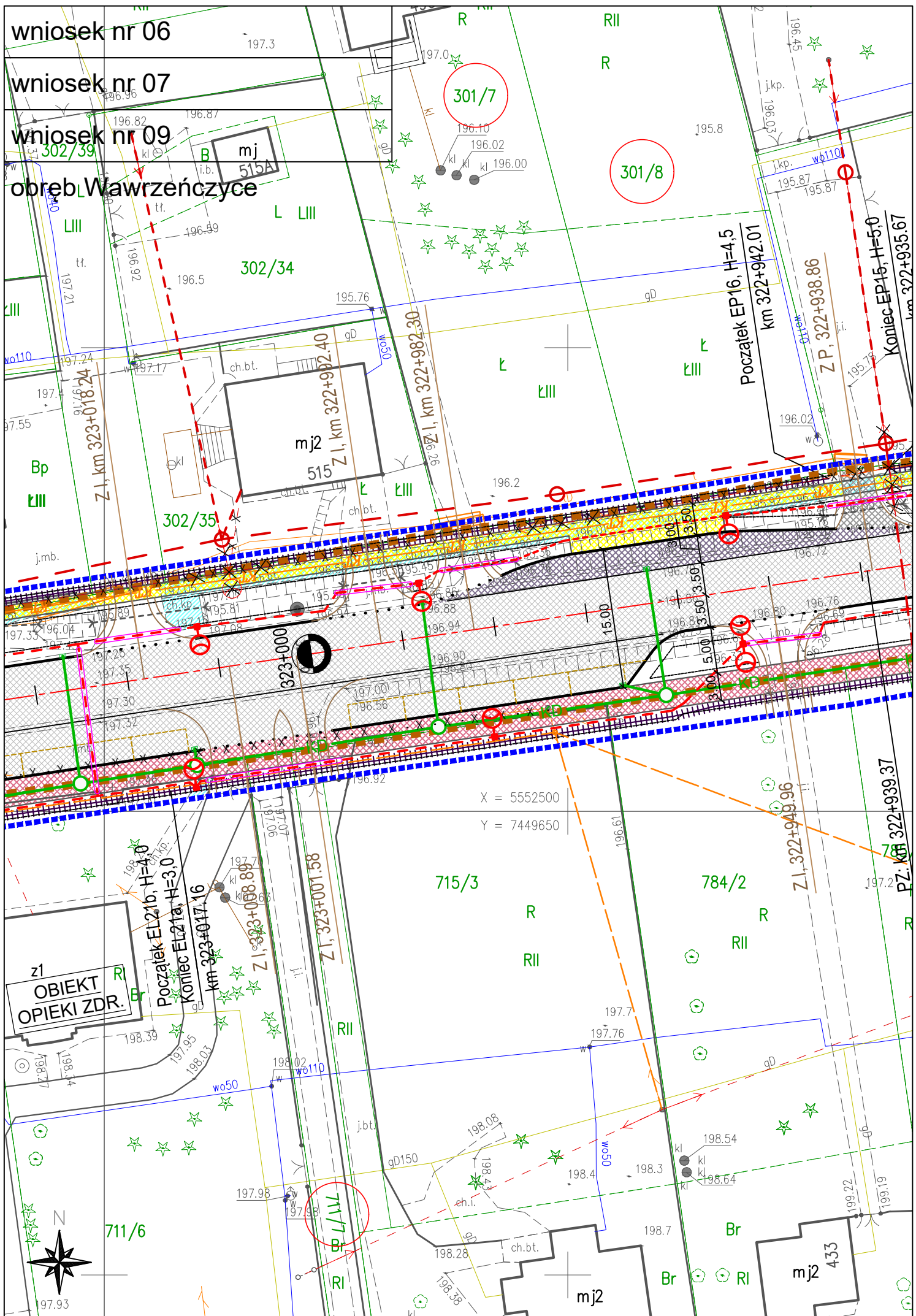


wniosek nr 06

wniosek nr 07

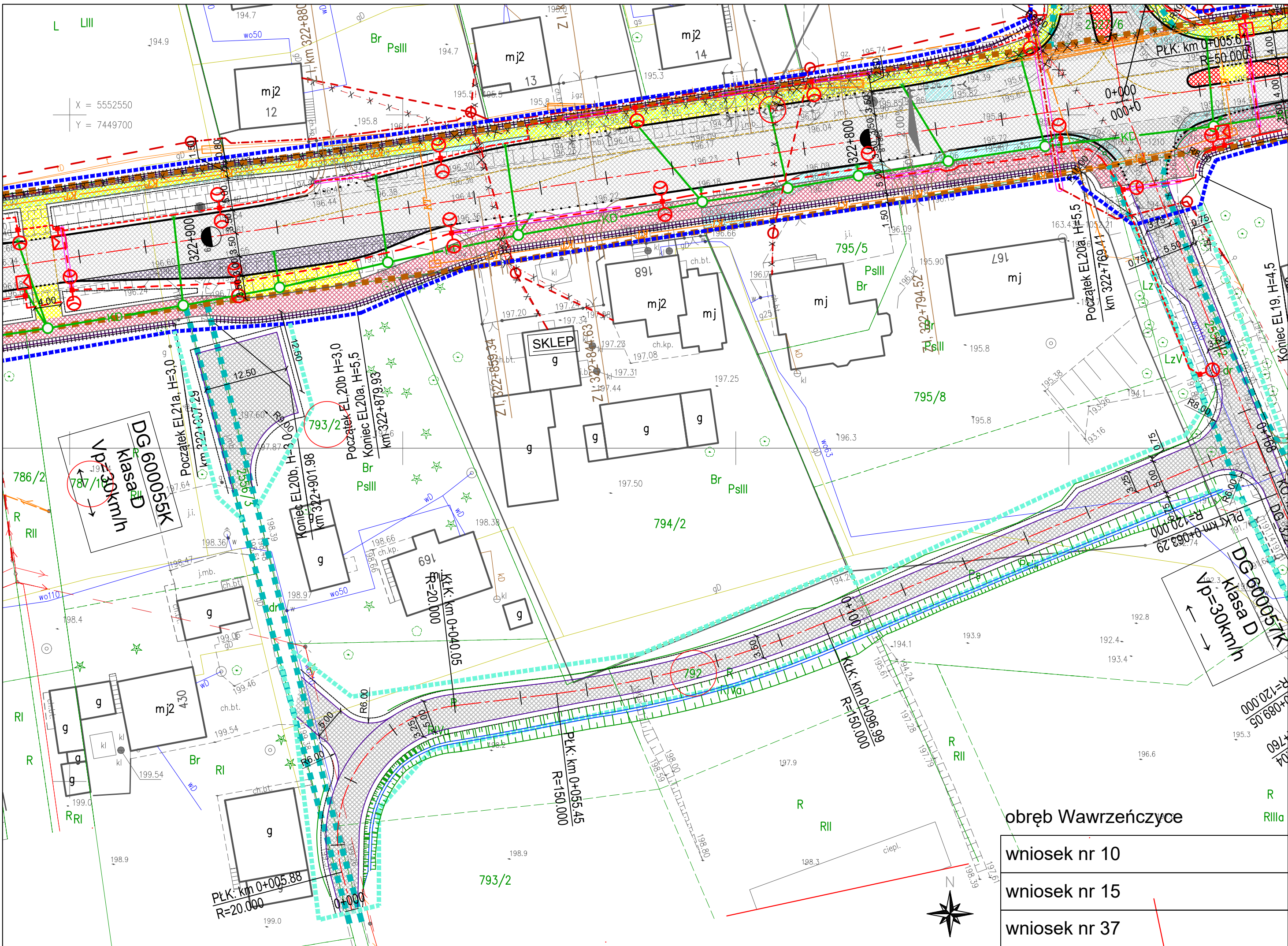
wniosek nr 09

obręb Wawrzeńczyce



X = 5552500
Y = 7449650



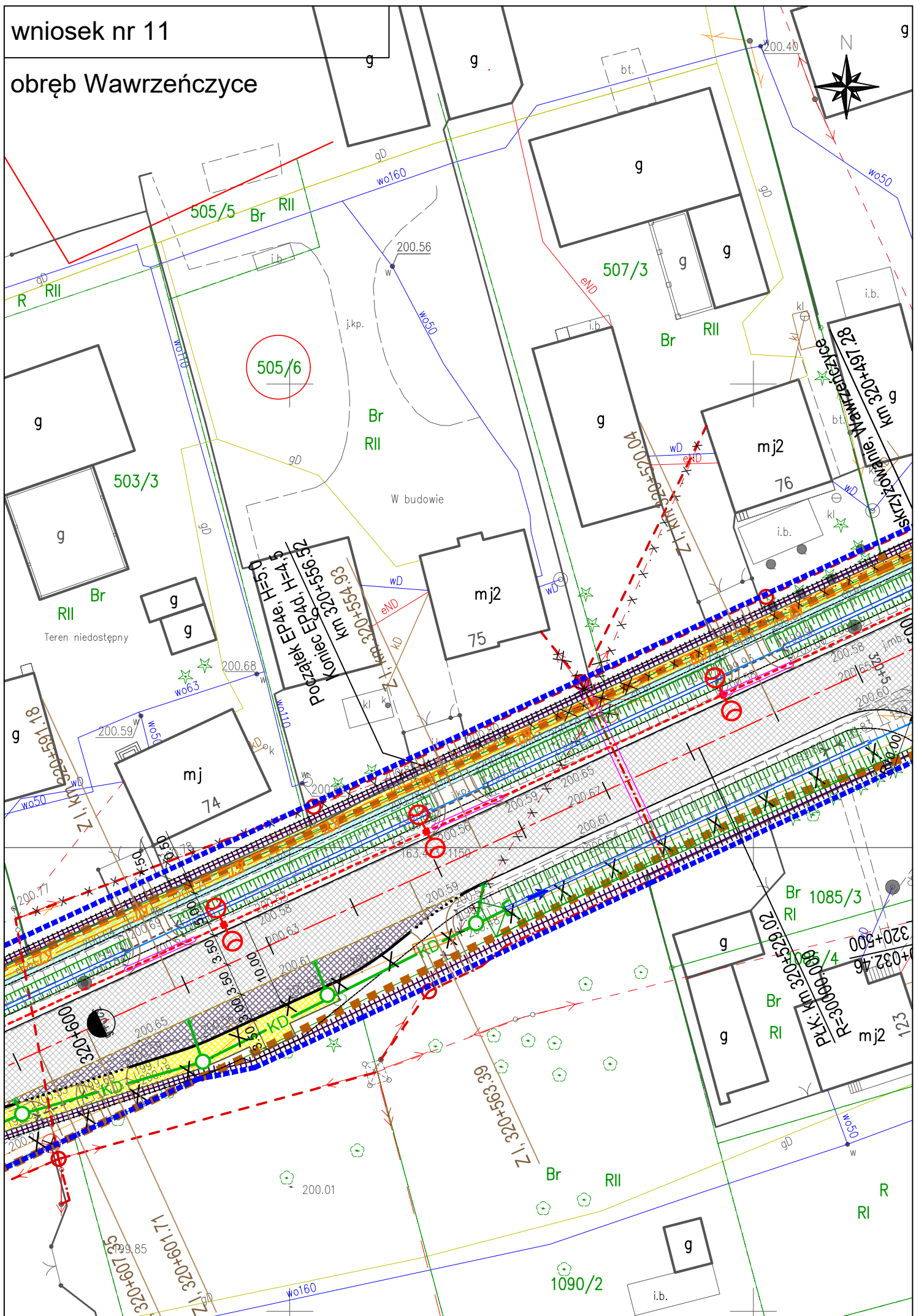


obręb Wawrzeńczyce

- wniosek nr 10
- wniosek nr 15
- wniosek nr 37

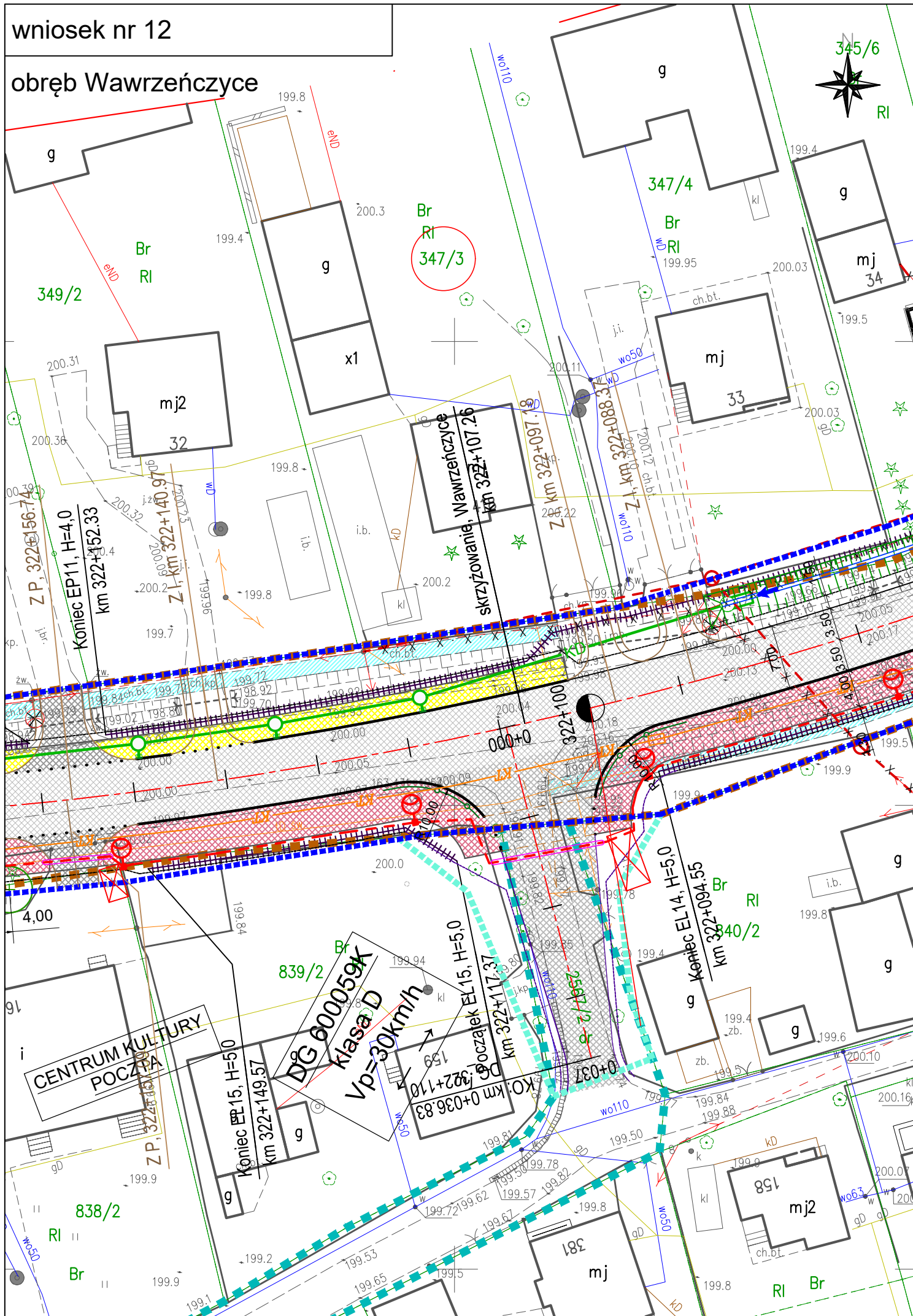
wniosek nr 11

obręb Wawrzeńczyce



wniosek nr 12

obręb Wawrzeńczyce



wniosek nr 16

wniosek nr 17

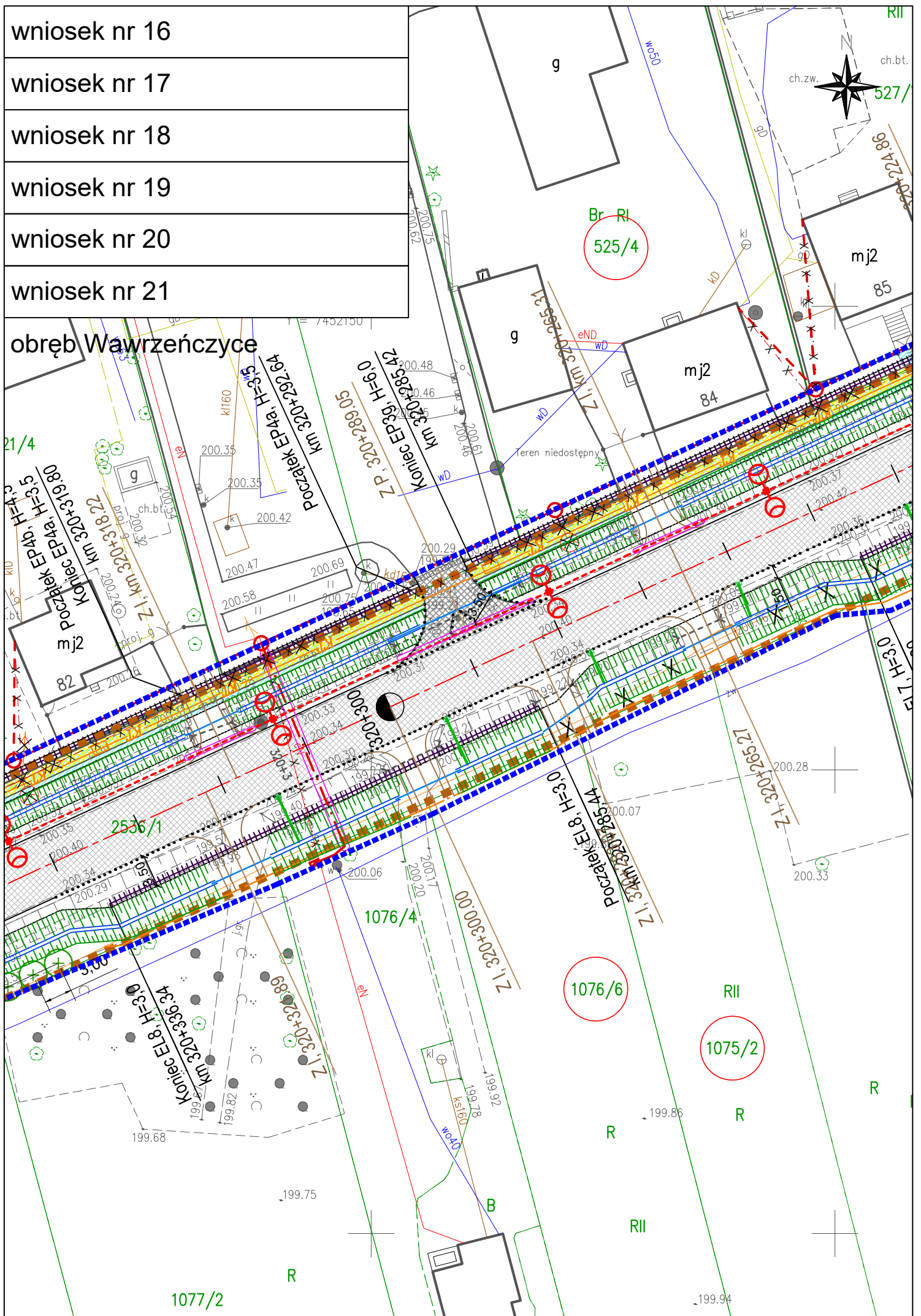
wniosek nr 18

wniosek nr 19

wniosek nr 20

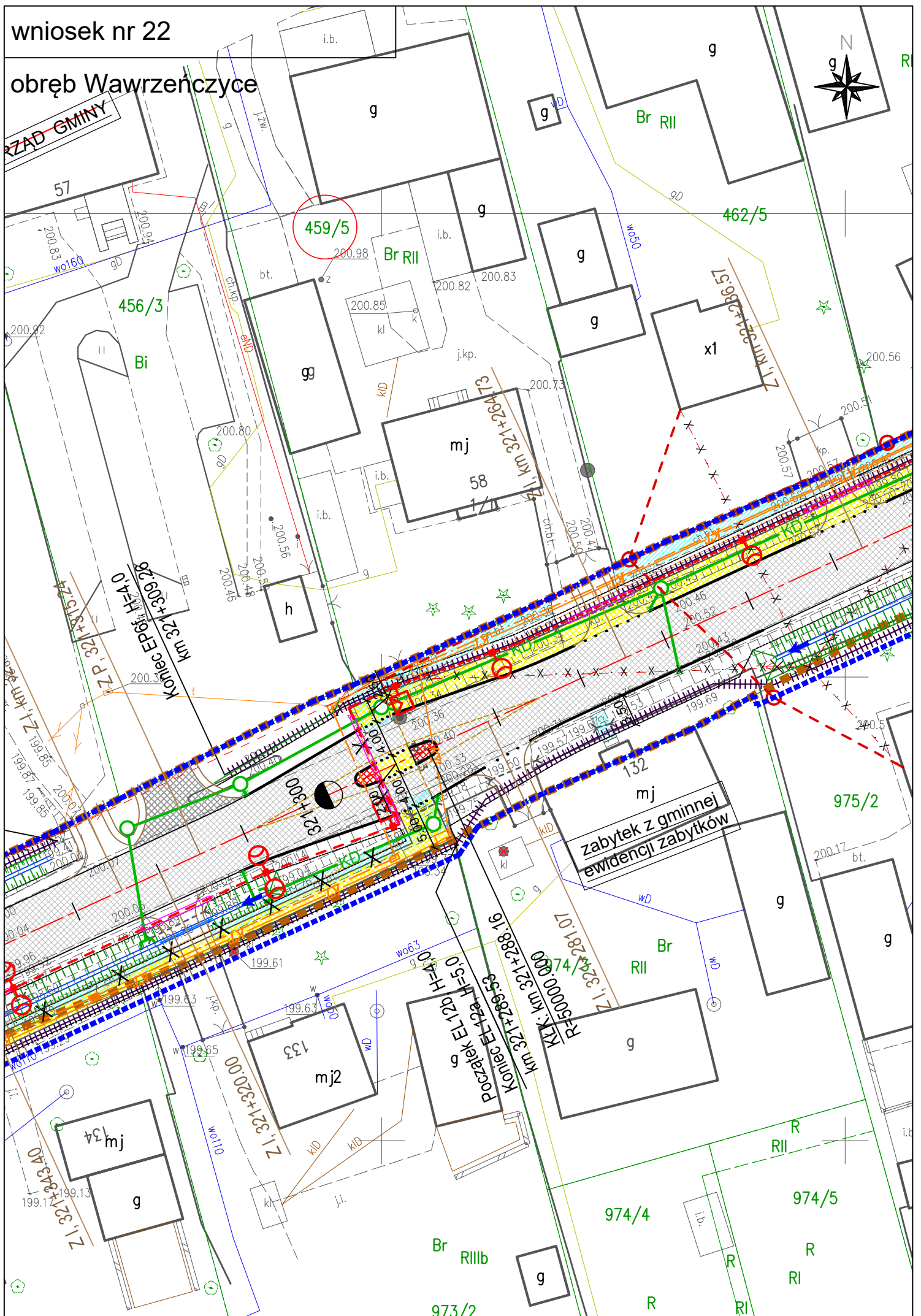
wniosek nr 21

obręb Wawrzeńczyce



wniosek nr 22

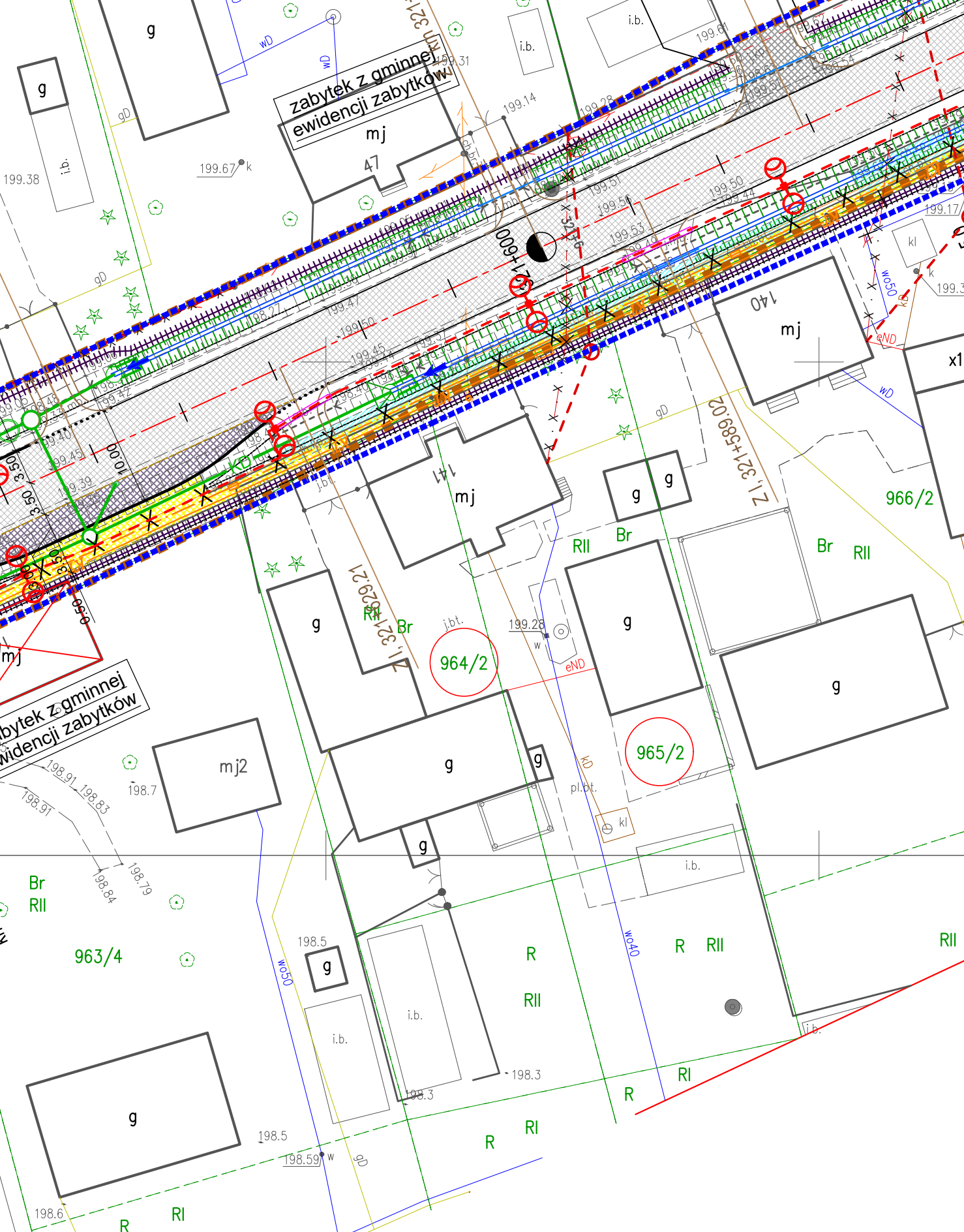
obręb Wawrzeńczyce



wniosek nr 28 X = 5552850 429/2
Y = 7450950

wniosek nr 29 Br RI

obręb Wawrzeńczyce



zabytek z gminnej ewidencji zabytków

zabytek z gminnej ewidencji zabytków

964/2

965/2

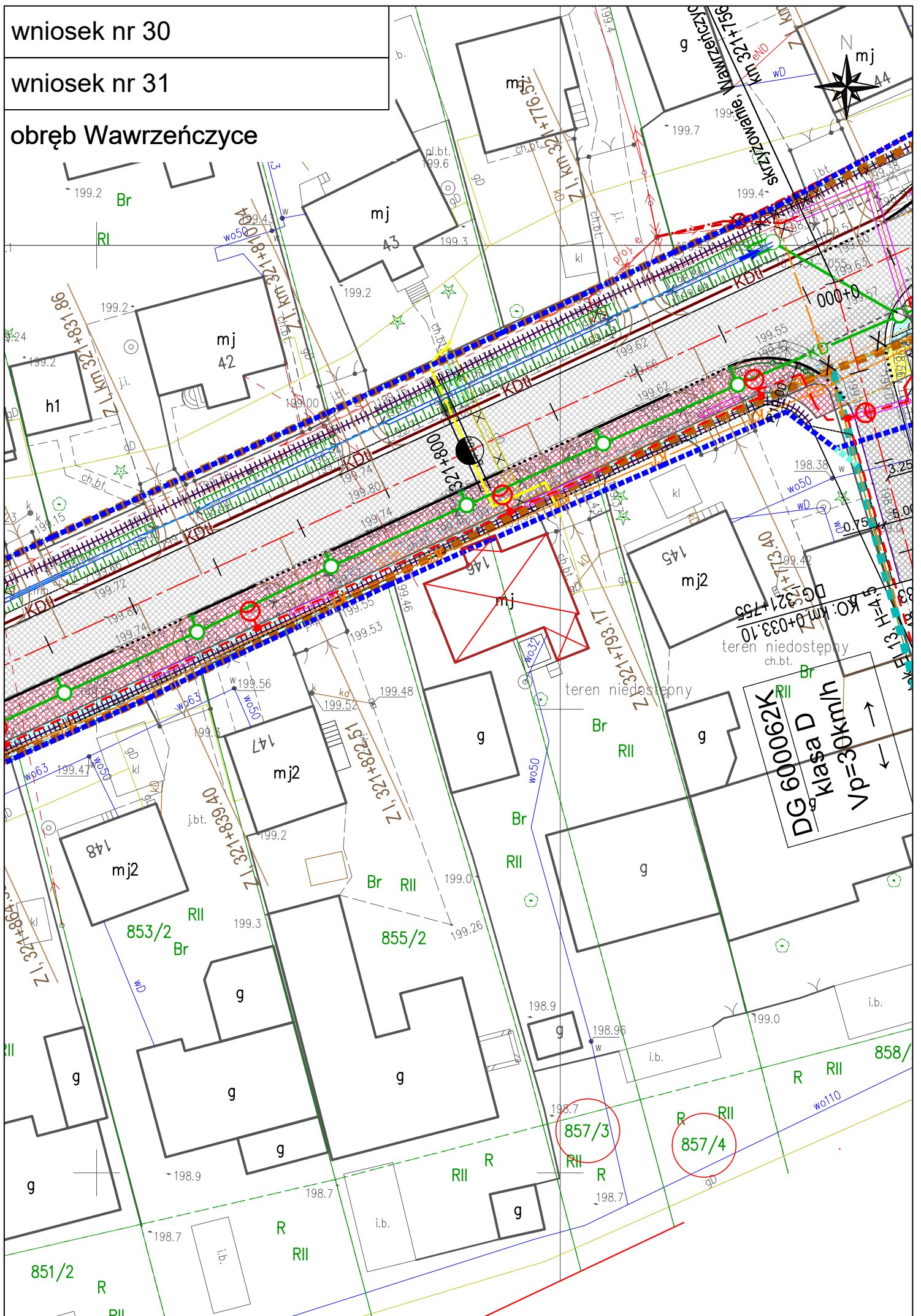
966/2

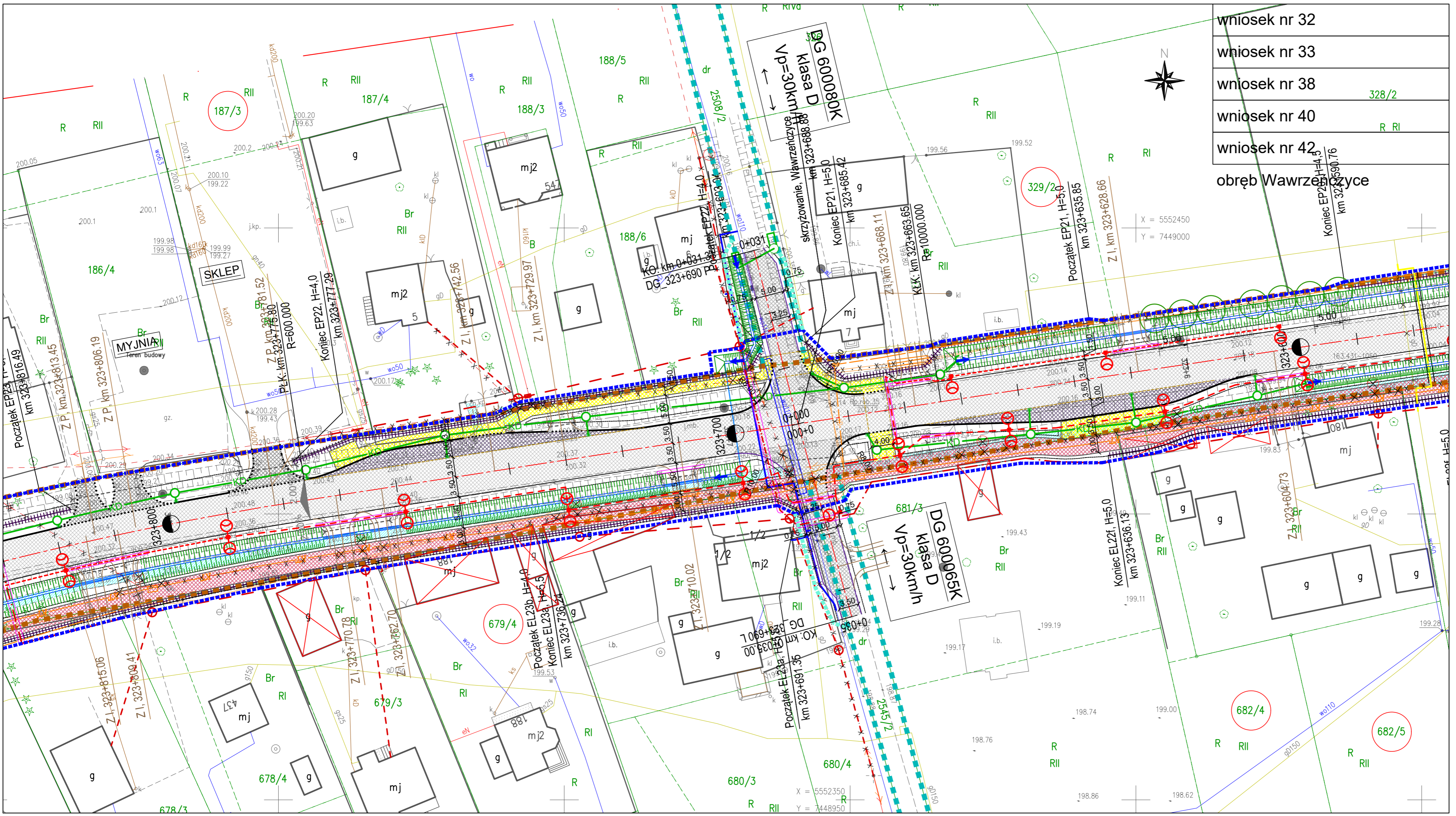
963/4

wniosek nr 30

wniosek nr 31

obręb Wawrzeńczyce





wniosek nr 32
wniosek nr 33
wniosek nr 38
wniosek nr 40
wniosek nr 42
obręb Wawrzyszew

X = 5552450
Y = 7449000

328/2

R RI

Koniec EP21, H=4.5
km 323+690.76

Początek EP21, H=5.0
km 323+635.85

Zl, km 323+628.66

Koniec EL22f, H=5.0
km 323+636.13

Zl, km 323+602.73

g g g g g

Br RII

g g g g g

g g g g g

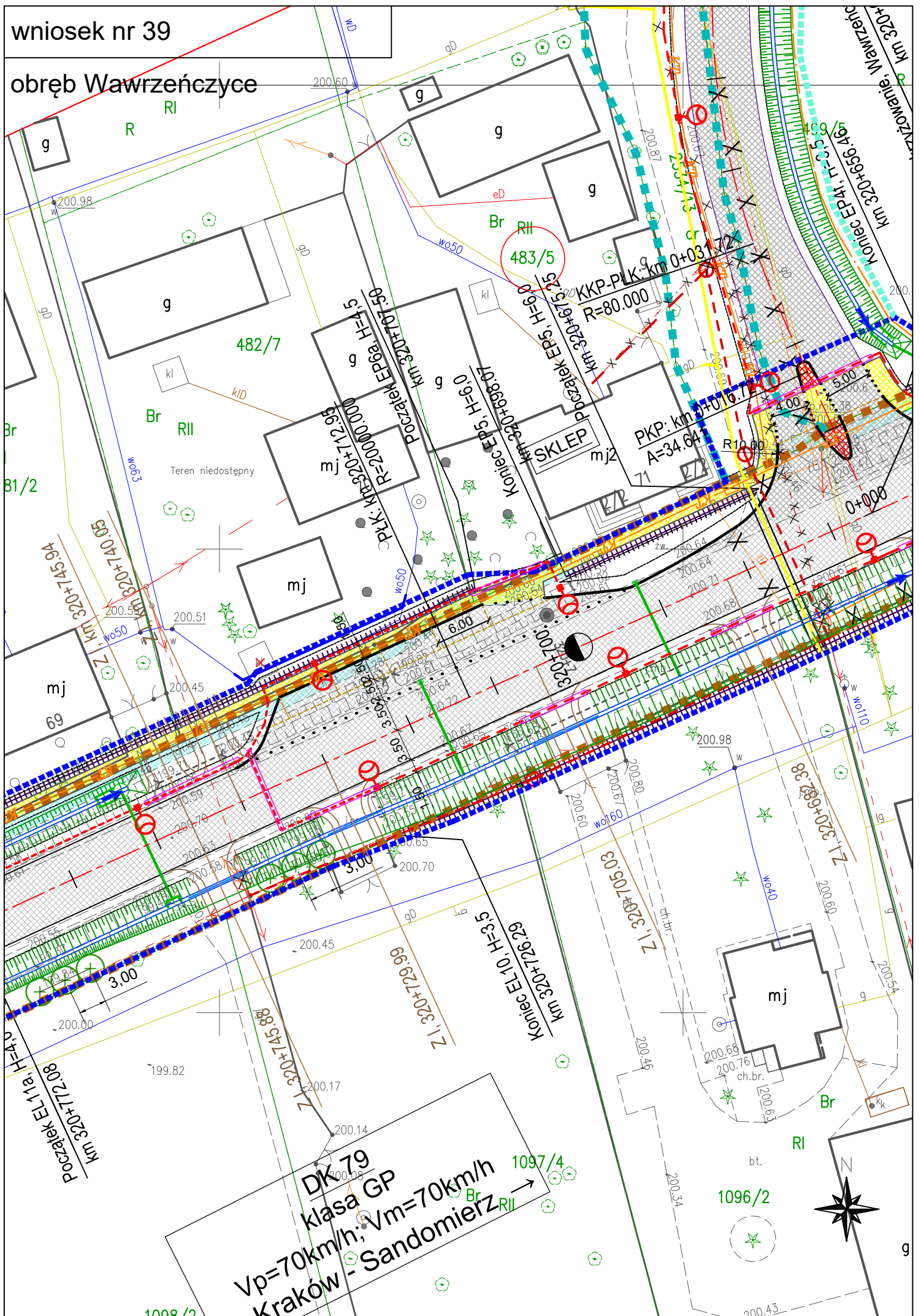
g g g g g

g g g g g

g g g g g

wniosek nr 39

obręb Wawrzeńczyce

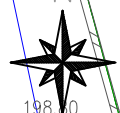


DK 79
klasa GP
 $V_p=70\text{km/h}$; $V_m=70\text{km/h}$
Kraków - Sandomierz



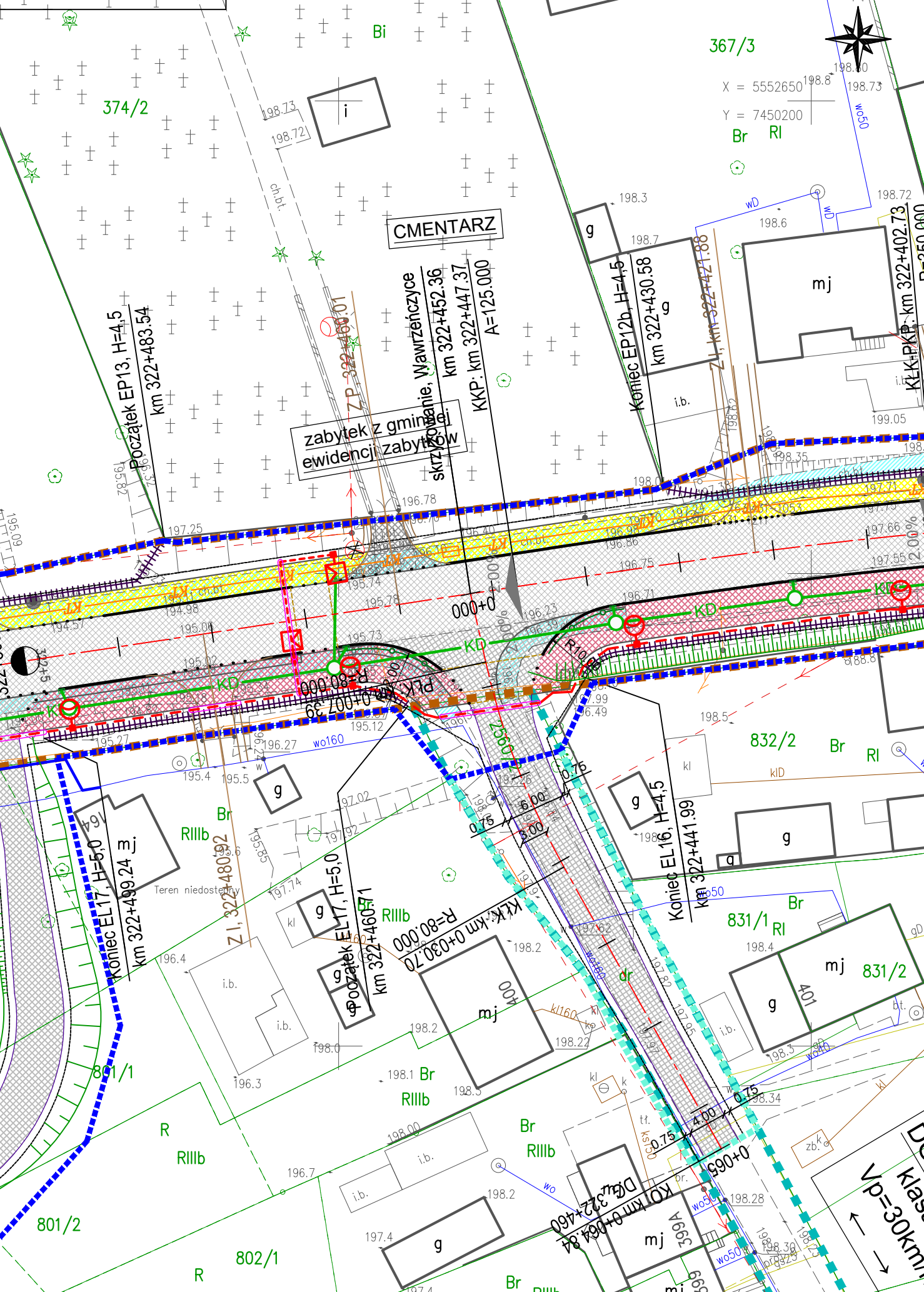
wniosek nr 41

obręb Wawrzeńczyce



367/3

X = 5552650
Y = 7450200
Br RI



CMENTARZ

zabytek z gminy...
evidencji zabytków

Początek EP13, H=4,5
km 322+483.54

Koniec EP12b, H=4,5
km 322+430.58

Koniec EL17, H=5,0
km 322+499.24

Początek EL17, H=5,0
km 322+460.71

Koniec EL16, H=4,5
km 322+441.99

KKK-km 0+030.70
R=80,000

801/2

802/1

832/2

831/1

831/2

Vp=30km/h